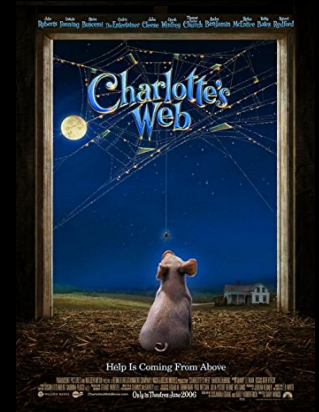


production co-ordinator / vfx production manager / art department co-ordinator

m +61 478 004 864 e michvenutti@gmail.com

imdb - https://www.imdb.com/name/nm0893209/?ref_=fn_al_nm_1

agent - freelancers promotions
t +613 9682 2722



referees

Line Producer Dean Hood
m + 61 438 886 284
e deanhood@bigpond.com

Set Decorator Rolland Pike
m + 61 408 998 392
e piker101@bigpond.net.au

Supervising Art Director Jules Cook
m +64 27 258 1010

Producer John Mabry
e: mabry1@mac.com

Furiosa, Mad Max Fury Road, The Whistleblower, Alien Covenant, The Life Aquatic

Emmy Winner for The Pacific, The Whistleblower, I, Frankenstein, The Thin Red Line

The Lord Of the Rings - Rings of Power

La Brea - /Seasons 2 & 3

FILMOGRAPHY

2023	LA BREA SEASON 3 VFX Production Manager	NBC Universal Producer: John Mabry, VFX Supervisor Andy Brown	television
2022 / 2023	LA BREA SEASON 3 VFX Co-ordinator	NBC Universal Producer: John Mabry, VFX Supervisor Andy Brown	television
2022	RUN RABBIT RUN Feature Film Starring Sarah Snook Art Department Co-ordinator	Carver Films Production Designer Vanessa Cerne	feature film
2021	SHANTARAM US TV Series Production Co-ordinator (Pre-production)	Paramount Pictures Producer Niall Delaney	television

2019 / 2021	LORD OF THE RINGS - THE RINGS OF POWER US TV Series Art Department Co-ordinator	Amazon Production designer Ramsey Avery Supervising Art Director Jules Cook	
2019	MYSTERY ROAD 2' TV Series (6 x 1 Hour Episodes) Production Co-ordinator	Dark Matter Media Pty Ltd Producers: Greer Simpkin & David Jowsey	television
2017 / 2018	THE WHISTLEBLOWER' Chinese/Australian Official Co-Pro Feature Film Production Co-ordinator	Whistleblower Movie Productions Pty Ltd / Village Roadshow Producers: Bill Kong, Mathew Tang, Hao Li Line Producer: Dean Hood	feature film
2016/2017	'PICNIC AT HANGING ROCK' TV Mini Series (6 x 1 Hour Episodes) Starring: Natalie Dormer Art Department Co-ordinator	FremantleMedia Australia Pty Ltd Exec Producers: Jo Porter Producer: Brett Popplewell Production Designer: Jo Ford Art Director: Simon McCutcheon	television
2015	'OPEN SLATHER' Television Sketch Comedy (20 x 1 Hour Episodes) Starring: Gina Riley, Magda Szubanski, Glenn Robbins, Marg Downey, Jane Turner, Shane Jacobson, Stephen Curry Senior Production Co-ordinator	Open Slather Productions Pty Ltd for Foxtel Exec Producers: Laura Waters & Rick McKenna Producer: Paul Walton	television
2016	'DOGFIGHT' Chinese/Australian Feature Film Art Department Co-ordinator	Dogfight Productions Pty Ltd Production Designer: Otello Stolfo Art Director: Bob Hern	feature film
2016	'THE LEFTOVERS SEASON 3" Television Drama (8 x Episodes) Costume Co-ordinator (Pre) Costume Supervisor (3 Eps)	HBO/Warner Bros Underdown Productions Pty Ltd Costume Designers: Rudy Mance & Mariott Kerr Production Manager: Tim Lyall	television
2015	'CHILDHOOD'S END' Television Drama (3 x Part Mini Series) Art Department Co-ordinator	Hayop Pty Ltd for NBC Universal – Sci Fi Channel Production Designer: Phil Ivey Art Director: Jeff Thorp	television
2014	'THE MOON & THE SUN' US Feature Film Art Department Co-ordinator	Moon & Sun Productions Pty Ltd Production Designer: Michelle McGahey Supervising Art Director: Bill Booth	feature film
2014	'NOWHERE BOYS SERIES II' Television Drama (13 x Half Hour Eps) Production Co-ordinator	Nowhere Boys 2 Productions Pty Ltd Matchbox Pictures Producers: Beth Frey Line Producer: Brendan Campbell Production Manager: Angeliqne Badenoeh	television
2013	'WORST YEAR OF MY LIFE AGAIN' Television Drama (13 x Half Hour Eps) Art Department Co-ordinator (Block 4)	Worst Year Productions Pty Ltd / ABC Designer: Tel Stolfo Art Director: Daryl Porter	television
2013	'NOWHERE BOYS' Television Drama (13 x Half Hour Eps) Production Co-ordinator	Lost Boys Productions Pty Ltd / Matchbox Pictures Producers: Tony Ayres, Beth Frey Line Producer: Brendan Campbell Production Manager: James Grandison	television
2013	'I, FRANKENSTEIN' US Feature Film Art Department Co-ordinator	Lakeshore Entertainment I, Frankenstein Productions Pty Ltd Production Designer: Michelle McGahey Supervising Art Director: Brian Edmunds	feature film
2008	'KNOWING' US Feature Film Starring Nicolas Cage Equipment & Additional Crew Co-ordinator Grips, Lighting, Rigging Lighting & Rigging	Ezekiel Films Pty Ltd Producer: Stephen Jones, Topher Dow PM: Jennifer Cornwell	feature film
2006	'WHERE THE WILD THINGS ARE' US Feature Film Construction Co-ordinator (Assist)	Warner Bros / Maurice Int'l Pty Ltd Director: Spike Jonze Construction Manager: Sean Ahearn	feature film
2005	'CHARLOTTE'S WEB' US Feature Film Starring Dakota Fanning Production Co-ordinator (Assist)	Paramount Pictures Producers: Jordan Kerner & Bernie Williams Director: Gary Winick Co-Producer: Anthony Winley	feature film
2002	'TOAST TO LOVE' JAPANESE Feature Film (Australian Shoot) Production Co-ordinator Exit Films Pty Ltd	Exit Films Pty Ltd Producers: Takashige Ichise & Kazutoshi Wadakura	feature film

2012	'UNDERBELLY SQUIZZY' Television Drama (8 x 1 Hour Eps) Art Department Co-ordinator	UB Squizzy Pty Ltd / ScreenTime Production Designer: Paddy Reardon Art Director: Michael Rumpf	television
2011	'NEIGHBOURS' Television Serial Senior Script Co-ordinator	FremantleMedia Australia Pty Ltd Exec Producer: Richard Jasek Producer: Allan Hardy Script Producers: Emma Gordon, & Andreas Fuhrmann Line Producer: Sue Wild Production Manager: Helen Boicovitis	television
2011	'CONSPIRACY 365' TV Drama (12 x 1 Hour Eps) Production Co-ordinator Blocks 1 & 2	Circa 365 Pty Ltd Producer: Linda Klejus Dir: Paul Goldman, Pino Amenta, Steve Mann Production Managers: Annie Venables & Brendan Campbell	television
2010 / 2011	'NEIGHBOURS' Television Serial Production Co-ordinator	FremantleMedia Australia Pty Ltd Exec Producer: Susan Bower Producer: Neal Kingston Dir: Jovita O'Shaughnessy, Tony Osicka, Gary Conway, Adrian Holmes, Jonathon Dutton Line Producer: Sue Wild Production Manager: Helen Boicovitis	television
2010	'KILLING TIME' Television Drama (10 x 1 Hour Eps) Production Co-ordinator	FremantleMedia Australia Pty Ltd Exec Producer: Jason Stephens Producer: John Wild Dir: Peter Andrikidis, Kevin Carlin, Ian Waston Line Producer: Amanda Crittenden	television
2009	'DEAD NORMAL' Television Drama (13 x Half Hour Eps) Production Co-ordinator	Burberry Productions Exec Producer: Ewan Burnett Producer: Margot McDonald Dir: Stephen Johnson, Wayne Blair PM: James Grandison	television
2007	'THE PACIFIC' US TV Miniseries Drama (10 Part) Set Decorating Co-ordinator Set Dec Teams: Military, Domestic & Ship Sets (Blue & Red Units)	HBO/First Division Productions Pty Ltd Exec Producers: Steven Spielberg & Tom Hanks Production Designer: Anthony Pratt Art Director: Richard Hobbs Set Decorators: Rolland Pike & Lisa Thompson	television
2006	'SECRETARY' TV Series Pilot Drama Starring Vince Colosimo Production Co-ordinator	Southern Star Entertainment Producer: Amanda Higgs Line Producer: Sue Edwards	television
2003 / 2004	'SCOOTER SECRET AGENT' Television Drama (23 x Half Hour Eps) Production Co-ordinator	Jonathan M Shiff Productions Pty Ltd Producers: Jonathan M Shiff, Daniel Scharf LP/PM: Chris Page	television
2000 / 2001	'SADDLE CLUB' Series 1 Television Drama (26 x Half Hour Eps) Production Co-ordinator Main & 2nd Units	Crawford Productions Pty Ltd / Protocol Entertainment (Canada) Producer: Lynn Bayonas	television
2000	'PIG'S BREAKFAST' Series 2 Television Drama (26 x Half Hour Eps) Production Co-ordinator (Assist)	Southern Star / West Street Prod No 4 Producer: Susie Campbell Script Prod: Mark Shirrefs LP/PM: Chris Page Production Co-ordinator: Kathryn O'Brien	television
1999	'ON THE BEACH' TV Miniseries 2 x 2 Hour Starring Armand Assante Bryan Brown & Rachel Ward Production Co-ordinator (2nd Unit)	Southern Star / West Street Prod No 6 & Showtime/Hallmark Ent Producer: John Edwards, Carol Hughes Production Manager: Chris Page Production Co-ordinator: Susie Wright	television
1998 / 1999	'PIG'S BREAKFAST' Series 1 Television Drama (26 x Half Hour Eps) Production Co-ordinator (Assist)	Southern Star / West Street Prod No 4 Producer: Susie Campbell Script Producer: Mark Shirrefs LP/PM: Chris Page Production Co-ordinator: Kathryn O'Brien	television
1998	'STATE CORONER' Series 2 Television Drama (14 x 1 Hour Eps) Starring Wendy Hughes Production Co-ordinator (Assist)	Crawford Prod / Harvey Taft Prod Producers: David Taft & Michael Harvey PM's: Richard Clendinnen & Chris Page Production Co-ordinator: Kathryn O'Brien	television
1997	'THE VIOLENT EARTH' TV Miniseries Drama (3 x 2 Hour Eps) Production Co-ordinator (Assist)	Crawford Prod / Gaumont (France) Producer: Jock Blair PM: Richard Clendinnen	television

1996 / 1997	'STATE CORONER' Series I Television Drama (14 x 1 Hour Eps) Starring Wendy Hughes Art Department Co-ordinator	Crawford Prod / Harvey Taff Prod Producers: David Taff & Michael Harvey Production Designer: Tel Stolfo PM: Richard Clendinnen	television
1995	MATERNITY LEAVE My finest Production – Isabella Venutti		
1994 / 1995	'HALIFAX fp' Television Drama (2 x Hour Eps 3, 4 & 5) Props Buyer	Simpson Le Mesurier Productions Producers: Roger Simpson & Roger Le Mesurier Production Designer: Tel Stolfo Art Director: Bernie Wynack	television
1994	'A COUNTRY PRACTICE' Television Serial Props Buyer/Set Dresser	JNP Films Productions Production Designer: Carole Harvey	television
1993	'LIFT OFF' Series 2 Television Drama (24 x Half Hour Eps) Standby Props (Puppetry component)	Australian Children's Television Foundation Production Designer: Tel Stolfo Art Director: Bernie Wynack	television
1993	'WORK COVER CAMPAIGN' TVC's & Corporate Videos Set Dresser, Props Buyer & Standby Props	Business Horizons Productions Production Designer: Paddy Reardon	television
1992 / 1993	'SNOWY' TV Miniseries Drama Art Department Runner / Junior Set Dresser	Simpson Le Mesurier Productions Producers: Roger Simpson & Roger Le Mesurier Production Designer: Tel Stolfo Art Director: Bernie Wynack	television
1992	'STARK' Television Miniseries Starring Colin Friels Art Department Runner / Junior Set Dresser	Cascade Ash / BBC Co-production Production Designers: Larry Eastwood & Jo Foard	television
1991 / 1992	'BREAKING OF STATUES' 'VANILLA SLICE' 2 X VCA Short Films Production Designer	VCA Graduating Student Films	short film
1991	'LIFT OFF' Series I Television Drama (24 x Half Hour Eps) Art Department Runner	Australian Children's Television Foundation Production Designer: Tel Stolfo Art Director: Bernie Wynack	television
1991	'THE INTRUDER' 'A SLOW NIGHT AT THE KUWAITI CAFÉ' 'THE FINAL STAGE' 3 x Feature Films Production Runner / Costume Assistant	Boulevard Films Producer: Barbie Taylor Production Designer: Bernie Wynack	feature film

EDUCATION

RMIT UNIVERSITY BACHELOR OF ARTS - MAJORING IS STUDIO CERAMIC DESIGN, PAINTING & SCULPTURE